

# Solenoid valve

## CPE14-M1CH-5/3BS-1/8

Part number: 550246

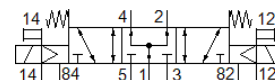
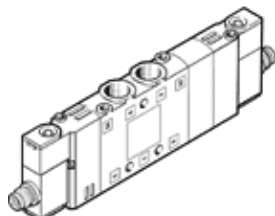
Classic - do not use for new projects

FESTO

Very compact assembly, with M8 plug connection.

Manifold mounting possible on aluminum profile. For 5-way valve use manifold CPE...-PRS-..., for 3-way valve use CPE...-3/2-PRS... .

Modern alternatives can be found by entering the first four characters of the type code in the search field.



## Data sheet

| Feature                               | Value                                                                                          |
|---------------------------------------|------------------------------------------------------------------------------------------------|
| Valve function                        | 5/3 pressurized                                                                                |
| Type of actuation                     | electrical                                                                                     |
| Width                                 | 14 mm                                                                                          |
| Standard nominal flow rate            | 750 l/min                                                                                      |
| Operating pressure MPa                | -0.09 ... 1 MPa                                                                                |
| Working pressure                      | -0.9 ... 10 bar                                                                                |
| Design structure                      | Piston slide                                                                                   |
| Type of reset                         | mechanical spring                                                                              |
| Maritime classification               | see certificate                                                                                |
| Protection class                      | IP65<br>IP67<br>with plug socket<br>to IEC 60529                                               |
| Nominal size                          | 6 mm                                                                                           |
| Exhaust-air function                  | throttleable                                                                                   |
| Sealing principle                     | soft                                                                                           |
| Assembly position                     | Any                                                                                            |
| Manual override                       | with accessories, detenting<br>Pushing                                                         |
| Type of piloting                      | Piloted                                                                                        |
| Pilot air supply                      | external                                                                                       |
| Flow direction                        | reversible                                                                                     |
| Valve position identification         | Label holder                                                                                   |
| Lap                                   | Positive overlap                                                                               |
| Pilot pressure MPa                    | 0.3 ... 0.8 MPa                                                                                |
| Pilot pressure                        | 3 ... 8 bar                                                                                    |
| Switching time off                    | 42 ms                                                                                          |
| Switching time on                     | 20 ms                                                                                          |
| Duty cycle                            | 100 %                                                                                          |
| Max. positive test pulse with logic 0 | 1,200 µs                                                                                       |
| Max. negative test pulse with logic 1 | 900 µs                                                                                         |
| Characteristic coil data              | 24 V DC: 1.28 W                                                                                |
| Permissible voltage fluctuation       | -15 % / +10 %                                                                                  |
| Operating medium                      | Compressed air in accordance with ISO8573-1:2010 [7:4:4]                                       |
| Note on operating and pilot medium    | Lubricated operation possible (subsequently required for further operation)                    |
| Vibration resistance                  | Transport application test at severity level 2 in accordance with FN 942017-4 and EN 60068-2-6 |
| Shock resistance                      | Shock test with severity level 2 in accordance with FN 942017-5 and EN 60068-2-27              |

| Feature                                 | Value                                                    |
|-----------------------------------------|----------------------------------------------------------|
| Corrosion resistance classification CRC | 2 - Moderate corrosion stress                            |
| PWIS conformity                         | VDMA24364-B1/B2-L                                        |
| Medium temperature                      | -5 ... 50 °C                                             |
| Pilot medium                            | Compressed air in accordance with ISO8573-1:2010 [7:4:4] |
| Ambient temperature                     | -5 ... 50 °C                                             |
| Max. tightening torque plug             | 0.4 Nm                                                   |
| Product weight                          | 120 g                                                    |
| Electrical connection                   | 4-pin<br>M8x1                                            |
| Mounting type                           | with through hole                                        |
| Pilot exhaust port 82                   | M3                                                       |
| Pilot exhaust port 84                   | M3                                                       |
| Pilot air port 12                       | M3                                                       |
| Pilot air port 14                       | M3                                                       |
| Pneumatic connection, port 1            | G1/8                                                     |
| Pneumatic connection, port 2            | G1/8                                                     |
| Pneumatic connection, port 3            | G1/8                                                     |
| Pneumatic connection, port 4            | G1/8                                                     |
| Pneumatic connection, port 5            | G1/8                                                     |
| Materials note                          | Conforms to RoHS                                         |
| Material seals                          | NBR                                                      |
| Material housing                        | Aluminum die cast                                        |