

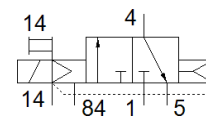
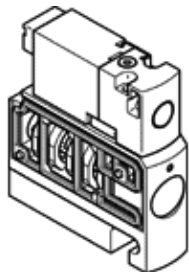
Solenoid valve

CPVSC1-M1HT-K-H-M5C

Part number: 548051

FESTO

For valve manifold CPV-SC, M5 connection.
This type is suitable for vacuum.



Data sheet

Feature	Value
Valve function	3/2 closed, monostable
Type of actuation	electrical
Valve size	10 mm
Standard nominal flow rate	170 l/min
Operating pressure MPa	-0.09 ... 0.7 MPa
Working pressure	-0.9 ... 7 bar
Design structure	Piston slide
Type of reset	Air spring
Authorization	c UL us - Recognized (OL)
Protection class	IP40
Exhaust-air function	not throttleable
Sealing principle	soft
Assembly position	Any
Manual override	Pushing
Type of piloting	Piloted
Pilot air supply	external
Flow direction	non reversible
Lap	Positive overlap
Pilot pressure MPa	0.3 ... 0.7 MPa
Pilot pressure	3 ... 7 bar
Switching time off	10 ms
Switching time on	10 ms
Max. positive test pulse with logic 0	500 µs
Max. negative test pulse with logic 1	400 µs
Characteristic coil data	24 V DC: 1 W
Operating medium	Compressed air in accordance with ISO8573-1:2010 [7:4:4]
Note on operating and pilot medium	Lubricated operation possible (subsequently required for further operation)
Vibration resistance	Transport application test at severity level 2 in accordance with FN 942017-4 and EN 60068-2-6
Shock resistance	Shock test with severity level 2 in accordance with FN 942017-5 and EN 60068-2-27
Corrosion resistance classification CRC	1 - Low corrosion stress
PWIS conformity	VDMA24364-B2-L
Medium temperature	-5 ... 50 °C
Ambient temperature	-5 ... 50 °C
Product weight	30.5 g
Electrical connection	2-pin Plug
Mounting type	with through hole
Pilot exhaust port 82/84	Common line
Pneumatic connection, port 1	Common line
Pneumatic connection, port 2	M5

Feature	Value
Pneumatic ports 3/5 combined	Common line
Pneumatic connection, port 4	M5
Materials note	Conforms to RoHS
Material seals	NBR
Material housing	Aluminum die cast