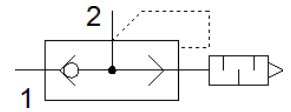
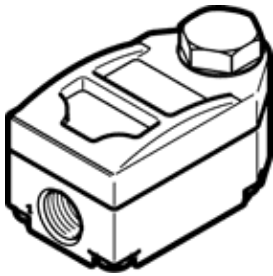


Rapid exhaust valve VBQF-U-G14-E

Part number: 548001

FESTO



Data sheet

Feature	Value
Valve function	Quick exhaust
Pneumatic connection, port 1	G1/4
Pneumatic connection, port 2	G1/4
Mounting type	Threaded
Standard flow rate exhaust 0.6-0 MPa (6-0 bar, 87-0 psi)	2,500 l/min
Standard nominal flow rate pressurisation 0.6-0.5 MPa (6-5 bar, 87-72.5 psi)	960 l/min
Working pressure	0.5 ... 10 bar
Ambient temperature	-20 ... 80 °C
Material housing	Aluminum die cast Zinc die-casting
Operating medium	Compressed air in accordance with ISO8573-1:2010 [7:4:4]
Nominal size	7 mm
Assembly position	Any
Note on operating and pilot medium	Lubricated operation possible (subsequently required for further operation)
Corrosion resistance classification CRC	1 - Low corrosion stress
PWIS conformity	VDMA24364-B1/B2-L
Cleanroom class	ISO class 4
Medium temperature	-20 ... 80 °C
Sound pressure level	75 dB(A)
Product weight	226 g
Materials note	Conforms to RoHS
Material seals	NBR