

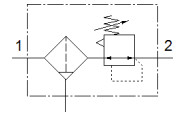
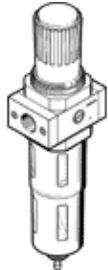
# Basic valve LFR-D-MINI

Part number: 546432  
Classic - do not use for new projects



With metal bowl guard.

Modern alternatives can be found by entering the first four characters of the type code in the search field.



## Data sheet

Feature	Value
Size	Mini
Series	D
Actuator lock	Rotary knob with lock
Assembly position	Vertical +/- 5°
Grade of filtration	40 µm
Condensate drain	manual rotary
Design structure	Filter regulator without pressure gauge
Max. condensate volume	0.748 oz(l)
Bowl guard	Metal bowl guard
Pressure gauge	Prepared for G1/8
Working pressure	13.8 ... 240 Psi
Pressure regulation range	6.9 ... 180 Psi
Max. pressure hysteresis	3 Psi
Standard nominal flow rate	26.25 cfm
Operating medium	Compressed air to ISO 8573-1:2010 [-:9:-] Inert gases
Note on operating and pilot medium	Lubricated operation possible (subsequently required for further operation)
Corrosion resistance classification CRC	2 - Moderate corrosion stress
PWIS conformity	VDMA24364-B1/B2-L
Storage temperature	14 ... 140 °F
Air purity class at output	Compressed air in accordance with ISO8573-1:2010 [7:8:4] Inert gases
Medium temperature	14 ... 140 °F
Ambient temperature	14 ... 140 °F
Product weight	14.35 oz
Mounting type	Line installation with accessories Optional
Materials note	Conforms to RoHS
Material housing	Zinc die-casting
Material bowl	PC