

# Basic valve LR-D-MINI

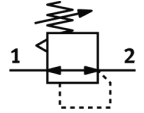
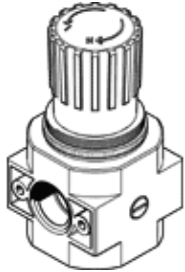
Part number: 546430

Classic - do not use for new projects

without threaded connecting plates.

Modern alternatives can be found by entering the first four characters of the type code in the search field.

FESTO



## Data sheet

Feature	Value
Size	Mini
Series	D
Actuator lock	Rotary knob with lock
Assembly position	Any
Design structure	directly-controlled diaphragm regulator
Controller function	Output pressure constant with initial pressure compensation with secondary exhaust
Pressure gauge	Prepared for G1/8
Working pressure	13.8 ... 240 Psi
Pressure regulation range	6.9 ... 180 Psi
Max. pressure hysteresis	3 Psi
Standard nominal flow rate	28 cfm
Operating medium	Compressed air in accordance with ISO8573-1:2010 [7:4:4] Inert gases
Note on operating and pilot medium	Lubricated operation possible (subsequently required for further operation)
Corrosion resistance classification CRC	2 - Moderate corrosion stress
PWIS conformity	VDMA24364-B1/B2-L
Air purity class at output	Compressed air in accordance with ISO8573-1:2010 [7:4:4] Inert gases
Medium temperature	14 ... 140 °F
Ambient temperature	14 ... 140 °F
Product weight	10.5 oz
Mounting type	Front panel installation Line installation with accessories
Materials note	Conforms to RoHS
Material of connecting plate	Zinc die-casting
Material seals	NBR
Material housing	Zinc die-casting