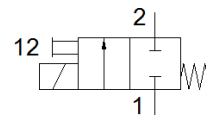
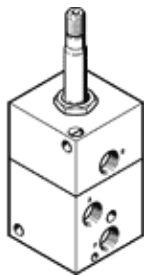


Solenoid valve

MFHB-2-1/4-B

Part number: 546064

FESTO



Data sheet

Feature	Value
Valve function	2/2 closed, monostable
Type of actuation	electrical
Standard nominal flow rate	600 l/min
Working pressure	2 ... 8 bar
Design structure	Poppet seat
Type of reset	mechanical spring
Protection class	IP65
Nominal size	7 mm
Assembly position	Any
Manual override	detenting
Switching time off	23 ms
Switching time on	12 ms
Corrosion resistance classification CRC	2 - Moderate corrosion stress
PWIS conformity	VDMA24364-B1/B2-L
Medium temperature	-10 ... 60 °C
Ambient temperature	-5 ... 40 °C
Product weight	575 g
Pilot exhaust port 84	M5
Pneumatic connection, port 1	G1/4
Pneumatic connection, port 2	G1/4
Material seals	NBR
Material housing	Aluminum Anodized