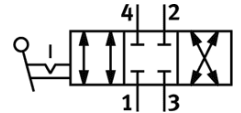
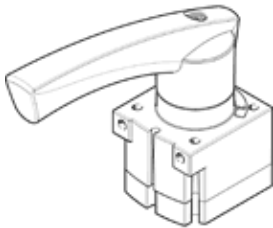


Hand lever valve VHER-AH-M04C-N12-UD

Part number: 545269

FESTO

In metal version with position sensing of the hand lever setting, 4/3-way valve function normally closed, outgoing direction downward.
This product is only available if ordered from the Festo Corporation, USA.



Data sheet

Feature	Value
Valve function	4/3 closed
Type of actuation	manual
Standard nominal flow rate	4,300 l/min
Working pressure	-0.95 ... 10 bar
Design structure	Rotary slide valve
Nominal size	12 mm
Exhaust-air function	throttleable
Sealing principle	Hard
Type of piloting	direct
Flow direction	reversible
Freedom from overlap	Yes
Switching position indicator	with accessories
Operating medium	Compressed air in accordance with ISO8573-1:2010 [7:4:4]
Note on operating and pilot medium	Lubricated operation possible (subsequently required for further operation)
Corrosion resistance classification CRC	2
Ambient temperature	-20 ... 80 °C
Actuation torque	5 Nm
Product weight	860 g
Mounting type	Optional Front panel installation with through hole
Pneumatic connection, port 1	NPT1/2-14
Pneumatic connection, port 2	NPT1/2-14
Pneumatic connection, port 3	NPT1/2-14
Pneumatic connection, port 4	NPT1/2-14
Materials note	Free of copper and PTFE Contains PWIS substances
Materials information for seals	NBR
Materials information, housing	Aluminum die cast