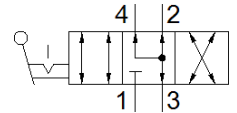
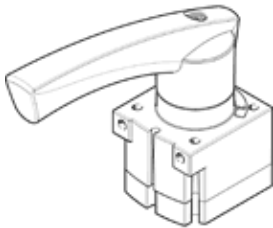


Hand lever valve VHER-AH-M04E-N18-UD

Part number: 545263

FESTO

In metal version with position sensing of the hand lever setting, 4/3-way valve function normally exhausted, outgoing direction downward.
This product is only available if ordered from the Festo Corporation, USA.



Data sheet

| Feature | Value |
|---|---|
| Valve function | 4/3 exhausted |
| Type of actuation | manual |
| Standard nominal flow rate | 800 l/min |
| Working pressure | -0.95 ... 10 bar |
| Design structure | Rotary slide valve |
| Nominal size | 6 mm |
| Exhaust-air function | throttleable |
| Sealing principle | Hard |
| Type of piloting | direct |
| Flow direction | reversible |
| Freedom from overlap | Yes |
| Signal status display | with accessories |
| Operating medium | Compressed air in accordance with ISO8573-1:2010 [7:4:4] |
| Note on operating and pilot medium | Lubricated operation possible (subsequently required for further operation) |
| Corrosion resistance classification CRC | 2 |
| Ambient temperature | -20 ... 80 °C |
| Actuation torque | 1.1 Nm |
| Product weight | 220 g |
| Mounting type | Optional Front panel installation with through hole |
| Pneumatic connection, port 1 | NPT1/8-27 |
| Pneumatic connection, port 2 | NPT1/8-27 |
| Pneumatic connection, port 3 | NPT1/8-27 |
| Pneumatic connection, port 4 | NPT1/8-27 |
| Materials note | Free of copper and PTFE Contains PWIS substances |
| Materials information for seals | NBR |
| Materials information, housing | Aluminum die cast |