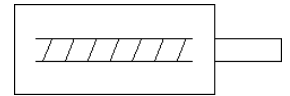
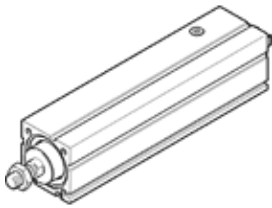


Electro-cylinder EPCC-BS-25-125-6P-A

Part number: 5428817

FESTO



Data sheet

Feature	Value
Size	25
Stroke	125 mm
Stroke reserve	0 mm
Piston rod thread	M6
Reversing backlash	100 µm
Spindle diameter	6 mm
Spindle pitch	6 mm/U
Max. angular deflection of piston rod +/-	1 deg
Assembly position	Any
Piston-rod end	Male thread
Motor type	Stepper motor Servomotor
Position detection	For proximity sensor
Design structure	Electric cylinder With ball screw
Spindle type	Ball screw
Protection against torque/guide	with plain-bearing guide
Max. acceleration	15 m/s ²
Max. speed	0.4 m/s
Repetition accuracy	±0,02 mm
Duty cycle	100 %
Corrosion resistance classification CRC	0 - No corrosion stress
PWIS conformity	VDMA24364 zone III
RSBP classification to CD-0033	F1a
Cleanroom class	ISO class 9
Storage temperature	-20 ... 60 °C
Relative air humidity	0 - 95 % non-condensing
Protection class	IP40
Ambient temperature	0 ... 60 °C
Impact energy in end positions	0.0012 J
Max. torque M _x	0 Nm
Max. torque M _y	0.6 Nm
Max. torque M _z	0.6 Nm
Max. radial force at drive shaft	30 N
Max. feed force F _x	75 N
Reference value for working load, horizontal	12 kg
Reference value for working load, vertical	6 kg
Mass moment of inertia J _H per meter of stroke	0.0095 kgcm ²
Mass moment of inertia J _L per kg of working load	0.0091 kgcm ²
Mass moment of inertia, J _O	0.0014 kgcm ²
Moving mass with 0 mm stroke	53 g
Additional mass factor per 10 mm of stroke	2.6 g
Basic weight for 0 mm stroke	132 g
Additional weight per 10 mm stroke	13 g
Mounting type	with accessories

Feature	Value
Materials note	Conforms to RoHS
Material housing	Wrought Aluminum alloy Smooth anodized
Material piston rod	High alloy steel, non-corrosive
Material spindle nut	Steel
Material spindle	Roller bearing steel