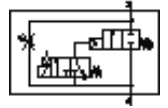
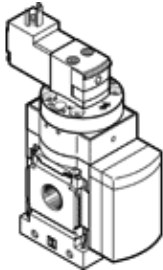


Pressure build-up valve MS6N-DE-3/8-10V24

Part number: 542574

FESTO

To slowly pressurize and exhaust pneumatic systems, flow direction from left to right



Data sheet

| Feature | Value |
|---|---|
| Type of actuation | electrical |
| Assembly position | Any |
| Manual override | detenting Pushing |
| Design structure | Piston seat |
| Type of reset | mechanical spring |
| Type of piloting | Piloted |
| Pilot air supply | Internal |
| Flow direction | non reversible |
| Valve function | 2/2 |
| Switching position indicator | with accessories |
| Working pressure | 4 ... 10 bar |
| b value | 0.48 |
| C value | 21.05 l/sbar |
| Standard nominal flow rate | 5,050 l/min |
| Duty cycle | 100 % |
| Characteristic coil data | 24 V DC: 1.8 W |
| Authorization | c UL - Recognized (OL) |
| Operating medium | Compressed air in accordance with ISO8573-1:2010 [7:4:4] Inert gases |
| Note on operating and pilot medium | Lubricated operation possible (subsequently required for further operation) |
| Corrosion resistance classification CRC | 2 - Moderate corrosion stress |
| PWIS conformity | VDMA24364-B2-L |
| Food-safe | See Supplementary material information |
| Medium temperature | -10 ... 50 °C |
| Protection class | IP65 |
| Ambient temperature | -10 ... 50 °C |
| Product weight | 680 g |
| Electrical connection | Plug pattern type C to EN 175301-803 Plug Per DIN EN 175301-803 Cubic design |
| Signal status display | with accessories |
| Mounting type | Line installation with accessories Optional |
| Pneumatic connection, port 1 | 3/8 NPT |
| Pneumatic connection, port 2 | 3/8 NPT |
| Materials note | Conforms to RoHS |
| Material seals | NBR |
| Material housing | Aluminum die cast |