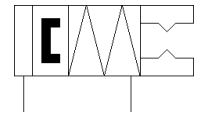
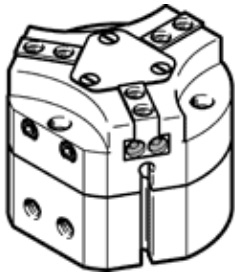


Three-point gripper HGDT-25-A-G2

Part number: 540861

FESTO

Sturdy, can be used as internal and external gripper, for position sensing. With gripping force retention when closing...-G2.



Data sheet

| Feature | Value |
|--|---|
| Size | 25 |
| Stroke per gripper jaw | 3 mm |
| Max. replacement accuracy | ≤ 0.2 mm |
| Max. angular gripper jaw backlash ax,ay | ≤ 0.1 deg |
| Max. gripper jaw backlash Sz | ≤ 0.05 mm |
| Rotationally symmetrical | ≤ 0.2 mm |
| Repetition accuracy, gripper | ≤ 0.03 mm |
| Number of gripper fingers | 3 |
| Assembly position | Any |
| Mode of operation | double-acting |
| Gripper function | 3-point |
| Gripper force back-up | On closing |
| Design structure | Inclined plane guided motion sequence |
| Position detection | For proximity sensor |
| Working pressure | 4 ... 8 bar |
| Working pressure, sealing air | 0 ... 0.5 bar |
| Max. operating frequency of gripper | ≤ 4 Hz |
| Min. opening time at 0.6 MPa (6 bar, 87 psi) | 33 ms |
| Min. closing time at 0.6 MPa (6 bar, 87 psi) | 25 ms |
| Operating medium | Compressed air in accordance with ISO8573-1:2010 [7:4:4] |
| Note on operating and pilot medium | Lubricated operation possible (subsequently required for further operation) |
| Corrosion resistance classification CRC | 2 - Moderate corrosion stress |
| PWIS conformity | VDMA24364-B1/B2-L |
| Ambient temperature | 5 ... 60 °C |
| Mass moment of inertia | 0.5 kgcm ² |
| Max. force on gripper jaw Fz static | 350 N |
| Max. torque at gripper Mx static | 7 Nm |
| Max. torque at gripper My static | 10 Nm |
| Max. torque at gripper Mz static | 5 Nm |
| Lubrication interval for guide components | 5 Mio SP |
| Max. mass per external gripper finger | 10 g |
| Product weight | 203 g |
| Mounting type | With through-hole and dowel pin With internal thread and dowel pin Optional |
| Pneumatic connection, sealing air | M5 |
| Pneumatic connection | M5 |
| Material cover cap | High alloy steel, non-corrosive |
| Material housing | Wrought Aluminum alloy COMPCOTE coated |
| Material gripper jaws | Steel, hardened |