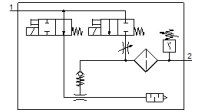
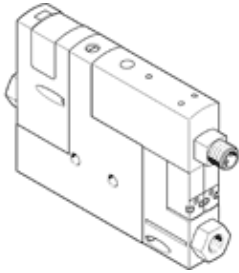


# Vacuum generator OVEM-07-H-B-GO-OE-N-2P

Part number: 540006

FESTO

Supply/vacuum port with G threads, exhaust port with open silencer



## Data sheet

| Feature                                      | Value   |
|--|---|
| Nominal size, Laval nozzle                   | 0.7 mm  |
| Grid dimension                               | 20 mm   |
| Design, silencer                             | open  |
| Assembly position                            | Any   |
| Ejector characteristic                       | High vacuum<br>Standard   |
| Grade of filtration                          | 40 µm   |
| Manual override                              | Pushing<br>Additionally via operating buttons   |
| Integrated function                          | Ejector pulse valve, electrical<br>Flow control valve<br>Electrical on-off valve<br>Filter<br>Air saving function, electrical<br>Non-return valve<br>Open silencer<br>Vacuum switch |
| Design structure                             | modular   |
| Short circuit strength                       | Yes   |
| Measured variable                            | Relative pressure   |
| Measuring principle                          | Piezoresistive  |
| Switching element function                   | Normally closed contact<br>Normally open contact  |
| Switching function                           | Window comparator<br>Threshold value comparator   |
| Valve function                               | open  |
| Polarity protected                           | for all electrical connections  |
| Standard switching input                     | IEC 61131-2   |
| Type of display                              | 4-place alphanumeric<br>Backlit LCD   |
| Indicating range [bar]                       | -0.999 ... 0 bar  |
| Unit(s) that can be displayed                | bar   |
| Hysteresis adjustment range [bar]            | -0.9 ... 0 bar  |
| Setting options                              | Via display and buttons   |
| Switching position indicator                 | LCD   |
| Operating status display                     | Optical   |
| Threshold setting range                      | -0.999 ... 0 bar  |
| Working pressure                             | 2 ... 8 bar   |
| Working pressure for max. vacuum             | 4.1 bar   |
| Max. vacuum                                  | 93 %  |
| Nominal working pressure                     | 6 bar   |
| Max. suction rate with respect to atmosphere | 16 l/min  |
| Air supply time at nominal working pressure  | 0.4 s   |
| Operating voltage range DC                   | 20.4 ... 27.6 V   |

| <b>Feature</b>                               | <b>Value</b>   |
|--|--|
| Duty cycle                                   | 100 %  |
| Inductive protective circuit                 | Adapted to MZ-, MY-, ME coils  |
| Insulation voltage                           | 50 V   |
| Idle current                                 | < 70 mA  |
| Max. output current                          | 100 mA   |
| Residual current                             | 0.1 mA   |
| Switch output                                | 2xPNP  |
| Voltage drop                                 | ≤ 1.5 V  |
| Characteristic coil data                     | 24 V DC: low-current phase 0.3 W, high-current phase 2.55 W            |
| Surge strength                               | 0.8 kV   |
| Overload withstand capability                | Available  |
| Degree of contamination                      | 3  |
| Authorization                                | RCM Mark<br>c UL us - Listed (OL)                                      |
| KC mark                                      | KC-EMV   |
| CE symbol (see declaration of conformity)    | according to EU-EMV guideline  |
| UKCA marking (see declaration of conformity) | To UK instructions for EMC   |
| Operating medium                             | Compressed air in accordance with ISO8573-1:2010 [7:4:4]               |
| Note on operating and pilot medium           | Lubricated operation not possible                                      |
| Corrosion resistance classification CRC      | 2 - Moderate corrosion stress  |
| PWIS conformity                              | VDMA24364 zone III   |
| Medium temperature                           | 0 ... 50 °C  |
| Relative air humidity                        | 5 - 85 %   |
| Noise level at nominal operating pressure    | 58 dB(A)   |
| Protection class                             | IP65   |
| Safety class                                 | III  |
| Ambient temperature                          | 0 ... 50 °C  |
| Max. tightening torque                       | 0.8 Nm with female thread<br>2.5 Nm with clearance hole                |
| Product weight                               | 310 g  |
| Pressure measuring range                     | -1 ... 0 bar   |
| Accuracy, FS                                 | 3 %FS  |
| Switching point reproducibility, FS          | 0.6 %  |
| Input circuit logic                          | PNP (positive-switching)   |
| Electrical connection                        | 5-pin<br>M12x1<br>Plug   |
| Mounting type                                | with through hole<br>with internal (female) thread<br>with accessories |
| Pneumatic connection, port 1                 | G1/4   |
| Pneumatic connection, port 3                 | Integrated silencer  |
| Vacuum connection                            | G1/4   |
| Materials note                               | Conforms to RoHS   |
| Material seals                               | NBR  |
| Material receiver nozzle                     | POM  |
| Material filter                              | Mesh<br>PA<br>Sintered steel   |
| Material filter housing                      | PA-reinforced  |
| Material housing                             | Aluminum die cast<br>PA-reinforced                                     |
| Material adjusting screw                     | Steel  |
| Material silencer                            | Wrought Aluminum alloy<br>PU foam                                      |
| Material screws                              | Steel  |
| Material screen                              | PA   |
| Material connector housing                   | Nickel-plated brass  |
| Material electrical contact                  | Brass, gold-plated   |
| Material pins                                | Steel  |
| Material transmitter nozzle                  | Wrought Aluminum alloy   |

| Feature          | Value                            |
|------------------|----------------------------------|
| Material keypad  | TPE-U                            |
| Material fitting | Anodised wrought aluminium alloy |