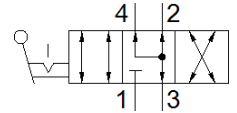
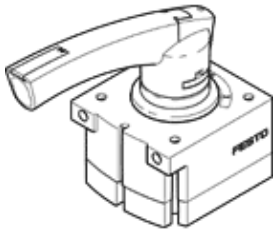


# Hand lever valve VHER-BH-M04E-G14-UD

Part number: 538203

FESTO

In plastic version with position sensing of the hand lever setting, 4/3-way valve function normally exhausted, lockable in 3 lever settings, outgoing direction downward.



## Data sheet

| Feature                                 | Value   |
|---|---|
| Valve function                          | 4/3 exhausted   |
| Type of actuation                       | manual  |
| Standard nominal flow rate              | 1,500 l/min   |
| Working pressure                        | -0.95 ... 10 bar  |
| Design structure                        | Rotary slide valve  |
| Nominal size                            | 8 mm  |
| Exhaust-air function                    | throttleable  |
| Actuator lock                           | with accessories, lockable  |
| Sealing principle                       | Hard  |
| Type of piloting                        | direct  |
| Flow direction                          | reversible  |
| Freedom from overlap                    | Yes   |
| Signal status display                   | with accessories  |
| Operating medium                        | Compressed air in accordance with ISO8573-1:2010 [7:4:4]                    |
| Note on operating and pilot medium      | Lubricated operation possible (subsequently required for further operation) |
| Corrosion resistance classification CRC | 2   |
| Ambient temperature                     | -20 ... 80 °C   |
| Actuation torque                        | 2.8 Nm  |
| Product weight                          | 375 g   |
| Mounting type                           | Optional<br>Front panel installation<br>with through hole                   |
| Pneumatic connection, port 1            | G1/4  |
| Pneumatic connection, port 2            | G1/4  |
| Pneumatic connection, port 3            | G1/4  |
| Pneumatic connection, port 4            | G1/4  |
| Materials note                          | Free of copper and PTFE<br>Contains PWIS substances                         |
| Materials information for seals         | NBR   |
| Materials information, housing          | Aluminum die cast   |