

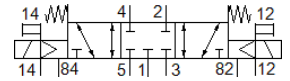
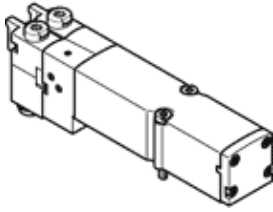
Solenoid valve

VMPA2-M1H-G-PI

Part number: 537955

FESTO

For valve manifold MPA-S.



Data sheet

Feature	Value
Valve function	5/3 closed
Type of actuation	electrical
Valve size	20 mm
Standard nominal flow rate	610 l/min
Operating pressure MPa	-0.09 ... 1 MPa
Working pressure	-0.9 ... 10 bar
Design structure	Piston slide
Type of reset	mechanical spring
Authorization	c UL us - Recognized (OL)
Protection class	IP65 to IEC 60529
Sealing principle	soft
Assembly position	Any
Manual override	detenting Pushing
Type of piloting	Piloted
Flow direction	reversible
Lap	Positive overlap
Signal status display	Yes
Pilot pressure MPa	0.3 ... 0.8 MPa
Pilot pressure	3 ... 8 bar
Suitability for vacuum	Yes
Standard nominal flow rate with QS-8	610 l/min
Standard nominal flow with QS-10	750 l/min
Switching time off	40 ms
Switching time on	10 ms
Switching time reversal	21 ms
Max. positive test pulse with logic 0	400 µs
Max. negative test pulse with logic 1	900 µs
Permissible voltage fluctuation	+/- 25 %
Operating medium	Compressed air in accordance with ISO8573-1:2010 [7:4:4]
Note on operating and pilot medium	Lubricated operation possible (subsequently required for further operation)
Vibration resistance	Transport application test at severity level 2 in accordance with FN 942017-4 and EN 60068-2-6
Shock resistance	Shock test with severity level 2 in accordance with FN 942017-5 and EN 60068-2-27
Corrosion resistance classification CRC	1 - Low corrosion stress
PWIS conformity	VDMA24364-B1/B2-L
Storage temperature	-20 ... 40 °C
Medium temperature	-5 ... 50 °C
Relative air humidity	Max. 90% at 40°C
Ambient temperature	-5 ... 50 °C
Max. tightening torque, valve mounting	0.65 Nm

Feature	Value
Product weight	100 g
Mounting type	with through hole
Materials note	Conforms to RoHS
Material seals	NBR
Material housing	Aluminum die cast