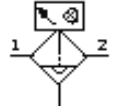


Fine filter MS6-LFM-1/4-BUV-DA-Z

Part number: 536848

FESTO

1 µm filter, metal bowl guard, fully automatic condensate drain, with differential pressure indicator, flow direction from right to left.



Data sheet

Feature	Value
Size	6
Series	MS
Assembly position	Vertical +/- 5°
Grade of filtration	1 µm
Filter efficiency	99.99 %
Condensate drain	fully automatic
Design structure	Fiber filter
Max. condensate volume	38 cm ³
Bowl guard	Metal bowl guard
Differential pressure display	Visual indicator
Inlet pressure 1	2 ... 12 bar
Standard nominal flow rate	550 l/min
Operating medium	Filtered, unlubricated compressed air, 5 µm filtration
Corrosion resistance classification CRC	2
Storage temperature	-10 ... 60 °C
Air purity class at output	2.7.3 per DIN ISO 8573-1
Medium temperature	5 ... 60 °C
Residual oil content	0.5 mg/m ³
Ambient temperature	5 ... 60 °C
Product weight	820 g
Mounting type	with accessories Optional Line installation
Pneumatic connection, port 1	G1/4
Pneumatic connection, port 2	G1/4
Materials note	Free of copper and PTFE
Materials information for seals	NBR
Materials information for filter	Boron silicate fiber
Materials information, housing	Aluminum die cast
Materials information for bowl	Wrought Aluminum alloy