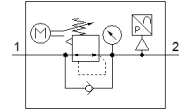
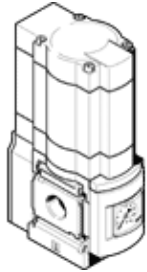


# Electrical pressure regulator MS6N-LRE-1/2-D7-PI-Z

Part number: 536535

FESTO

Indirectly controlled regulators, working pressure up to 12 bar.  
Type to be discontinued. Available until 2023. See Support Portal for alternative products.



## Data sheet

| Feature  | Value  |
|--|--|
| Size   | 6  |
| Series   | MS   |
| Assembly position                                | Any<br>Preferably vertical   |
| Design structure                                 | Electrically adjustable pressure regulator   |
| Short circuit strength                           | for all electrical connections   |
| Controller function                              | Output pressure constant<br>with initial pressure compensation<br>with secondary exhaust |
| Pressure gauge                                   | with pressure gauge  |
| Operating pressure MPa                           | 0.08 ... 2 MPa   |
| Working pressure                                 | 0.8 ... 20 bar   |
| Pressure regulation range                        | 0.5 ... 12 bar   |
| Max. pressure hysteresis                         | 0.25 bar   |
| Standard nominal flow rate                       | 5,500 l/min  |
| Analog output                                    | 4 - 20 mA  |
| Duration of control at 25 °C                     | Max. 90 s  |
| Type of inputs                                   | Per IEC 61131-2<br>No electrical isolation   |
| Nominal operating voltage DC                     | 24 V   |
| Current consumption at nominal operating voltage | Max. 1 A   |
| Current consumption                              | max 3.5 A at 24 V DC   |
| Control duration/ interval ratio                 | 1:3  |
| Permissible voltage fluctuation                  | +/- 10 %   |
| CE symbol (see declaration of conformity)        | according to EU-EMV guideline  |
| Operating medium                                 | Compressed air in accordance with ISO8573-1:2010 [7:4:4]<br>Inert gases                  |
| Note on operating and pilot medium               | Lubricated operation possible (subsequently required for further operation)              |
| Corrosion resistance classification CRC          | 2 - Moderate corrosion stress  |
| PWIS conformity                                  | VDMA24364-B2-L   |
| Storage temperature                              | -10 ... 50 °C  |
| Food-safe  | See Supplementary material information   |
| Medium temperature                               | 0 ... 50 °C  |
| Protection class                                 | IP65   |
| Ambient temperature                              | 0 ... 50 °C  |
| Product weight                                   | 1,280 g  |
| Analog outputs, absolute accuracy at 25 °C       | ± 3%   |
| Cable interface                                  | Input: M12x1 plug, 5-pin<br>Output: M8x1 plug, 3-pin                                     |
| Mounting type                                    | Line installation<br>with accessories  |

| Feature                      | Value             |
|------------------------------|-------------------|
|                              | Optional          |
| Pneumatic connection, port 1 | 1/2 NPT           |
| Pneumatic connection, port 2 | 1/2 NPT           |
| Material seals               | NBR               |
| Material housing             | Aluminum die cast |
| Material membrane            | NBR               |