

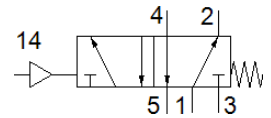
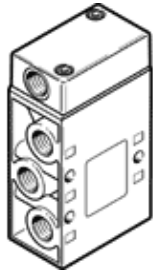
Pneumatic valve

VL-5-1/8-EX

Part number: 536032

FESTO

5/2-way function, pneumatically actuated, with spring return



Data sheet

Feature	Value
Valve function	5/2 monostable
Type of actuation	pneumatic
Width	26 mm
Standard nominal flow rate	500 l/min
Operating pressure MPa	0 ... 1 MPa
Working pressure	0 ... 10 bar
Design structure	Poppet seat
Type of reset	mechanical spring
Protection class	IP65
CE symbol (see declaration of conformity)	according to EU-Ex protection guideline (ATEX)
UKCA marking (see declaration of conformity)	To UK EX instructions
ATEX category Gas	II 2G
ATEX category Dust	II 2D
Explosion ignition protection type Gas	Ex h IIC T4 Gb
Explosion ignition protection type Dust	Ex h IIIC T130°C Db
Explosion-proof ambient temperature	-10°C ≤ Ta ≤ +60°C
Explosion protection certification outside the EU	EPL Db (GB) EPL Gb (GB)
Nominal size	5 mm
Grid dimension	27 mm
Exhaust-air function	throttleable
Sealing principle	soft
Assembly position	Any
Type of piloting	direct
Pilot air supply	external
Flow direction	non reversible
Lap	Underlap
Pilot pressure MPa	0.12 ... 1 MPa
Pilot pressure	1.2 ... 10 bar
Max. switching frequency	12 Hz
Switching time off	16 ms
Switching time on	5 ms
Max. positive test pulse with logic 0	2,200 μs
Max. negative test pulse with logic 1	3,700 μs
Operating medium	Compressed air in accordance with ISO8573-1:2010 [7:4:4]
Note on operating and pilot medium	Lubricated operation possible (subsequently required for further operation)
Corrosion resistance classification CRC	1 - Low corrosion stress
PWIS conformity	VDMA24364-B1/B2-L
Storage temperature	-20 ... 60 °C
Medium temperature	-10 ... 60 °C
Pilot medium	Compressed air in accordance with ISO8573-1:2010 [7:4:4]
Ambient temperature	-10 ... 60 °C
Product weight	220 g

Feature	Value
Mounting type	on manifold rail with through hole Optional
Scavenging orifice connection	M5
Pilot exhaust port 82	M5
Pilot air port 14	G1/8
Pneumatic connection, port 1	G1/8
Pneumatic connection, port 2	G1/8
Pneumatic connection, port 3	G1/8
Pneumatic connection, port 4	G1/8
Pneumatic connection, port 5	G1/8
Materials note	Conforms to RoHS
Material seals	NBR TPE-U(PU)
Material housing	Aluminum die cast