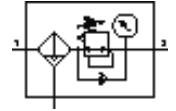


Filter regulator MS4-LFR-1/8-D7-CUV-AS-Z

Part number: 535705

FESTO

Maximum output pressure 12 bar, 5 µm filter, with pressure gauge, lockable regulator head, metal bowl guard, fully automatic condensate drain, flow direction from right to left.



Data sheet

Feature	Value
Size	4
Series	MS
Actuator lock	with accessories, lockable
Assembly position	Vertical +/- 5°
Grade of filtration	5 µm
Condensate drain	fully automatic
Design structure	Filter regulator with pressure gauge
Max. condensate volume	25 ml
Controller function	Output pressure constant with secondary exhaust with return flow
Bowl guard	integrated as metal shell
Pressure gauge	with pressure gauge
Pressure control range	0.5 ... 12 bar
Inlet pressure 1	2 ... 12 bar
Max. pressure hysteresis	0.25 bar
Standard nominal flow rate	850 l/min
Operating medium	Compressed air
Corrosion resistance classification CRC	2
Storage temperature	-10 ... 60 °C
Air purity class at output	3.7.- per DIN ISO 8573-1
Medium temperature	5 ... 60 °C
Ambient temperature	5 ... 60 °C
Product weight	475 g
Mounting type	with accessories Optional Front panel installation Line installation
Pneumatic connection, port 1	G1/8
Pneumatic connection, port 2	G1/8
Materials information for seals	NBR
Materials information, housing	Aluminum die cast
Materials information for bowl	Aluminum die cast Wrought Aluminum alloy
Materials info, viewing window	PA
Material information, isolating disc	POM