

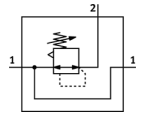
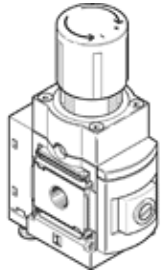
Precision pressure regulator

MS6-LRPB-1/2-D4-A8-BE

Part number: 534916

FESTO

indirectly controlled regulators, working pressure up to 2.5 bar.



Data sheet

| Feature | Value |
|---|--|
| Size | 6 |
| Series | MS |
| Actuator lock | Rotary knob with lock |
| Assembly position | Any |
| Design structure | Piloted precision diaphragm regulator |
| Controller function | Output pressure constant with secondary exhaust |
| Pressure gauge | G1/8" prepared |
| Working pressure | 1 ... 14 bar |
| Pressure control range | 0.05 ... 2.5 bar |
| Max. pressure hysteresis | 0.02 bar |
| Flow rate, secondary venting | ≥ 450 l/min |
| Standard nominal flow rate | ≥ 2,300 l/min |
| Operating medium | Compressed air in accordance with ISO8573-1:2010 [7:4:4] Inert gases |
| Note on operating and pilot medium | Lubricated operation not possible |
| Corrosion resistance classification CRC | 2 |
| Storage temperature | -10 ... 60 °C |
| Medium temperature | -10 ... 60 °C |
| Ambient temperature | -10 ... 60 °C |
| Product weight | 1,000 g |
| Mounting type | Optional Front panel installation Line installation with accessories |
| Pneumatic connection, port 1 | G1/2 |
| Pneumatic connection, port 2 | G1/2 |
| Pneumatic connection, port 3 | G1/4 |
| Materials note | Free of copper and PTFE Conforms to RoHS |
| Materials information for seals | NBR |
| Materials information, housing | Aluminum |