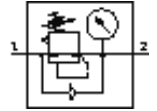


Pressure regulator MS6N-LRB-1/2-D5-AS-BI-Z

Part number: 531825

FESTO

For manifold assembly, angled outlet block with QS push-in connector, 4 bar maximum output pressure, with pressure gauge, P2 connection at front.



Data sheet

Feature	Value
Size	6
Series	MS
Actuator lock	with accessories, lockable
Assembly position	Any
Design structure	directly-controlled diaphragm regulator with looped-through compressed air supply
Controller function	Output pressure constant with initial pressure compensation with secondary exhaust
Pressure gauge	with pressure gauge
Pressure control range	0.3 ... 4 bar
Inlet pressure 1	0.8 ... 20 bar
Max. pressure hysteresis	0.25 bar
Standard nominal flow rate	600 l/min
Operating medium	Compressed air
Corrosion resistance classification CRC	2
Storage temperature	-10 ... 60 °C
Medium temperature	-10 ... 60 °C
Ambient temperature	-10 ... 60 °C
Product weight	747 g
Mounting type	with accessories Optional Front panel installation Line installation
Pneumatic connection, port 1	NPT1/2-14
Pneumatic connection, port 2	QS-8
Materials information for control panel	POM PA
Materials information for seals	NBR
Materials information, housing	Aluminum die cast
Materials information for membrane	NBR