

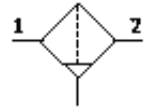
Filter

MS6N-LF-1/4-EUM-Z

Part number: 531558

FESTO

40 µm filter, metal bowl, manual condensate drain, direction of flow:
from right to left.



Data sheet

Feature	Value
Size	6
Series	MS
Assembly position	Vertical +/- 5°
Grade of filtration	40 µm
Condensate drain	manual rotary
Design structure	Sintered filter with centrifugal separator
Max. condensate volume	38 cm ³
Bowl guard	Metal bowl guard
Inlet pressure 1	0 ... 20 bar
Standard nominal flow rate	2,500 l/min
Operating medium	Compressed air
Corrosion resistance classification CRC	2
Storage temperature	-10 ... 60 °C
Air purity class at output	5:7:- per DIN ISO 8573-1
Medium temperature	-10 ... 60 °C
Ambient temperature	-10 ... 60 °C
Product weight	820 g
Mounting type	with accessories Optional Line installation
Pneumatic connection, port 1	NPT1/4-18
Pneumatic connection, port 2	NPT1/4-18
Materials note	Free of copper and PTFE
Materials information for seals	NBR
Materials information for filter	PE
Materials information, housing	Aluminum die cast
Materials information for bowl	Wrought Aluminum alloy