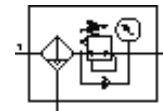


# Filter regulator MS6N-LFR-1/2-D7-ERV-AS-Z

Part number: 531279

FESTO

Maximum output pressure 12 bar, 40 µm filter, with pressure gauge, lockable regulator head, plastic bowl with plastic bowl guard, fully automatic condensate drain, flow direction from right to left.



## Data sheet

| Feature                                 | Value   |
|---|---|
| Size                                    | 6   |
| Series                                  | MS  |
| Actuator lock                           | with accessories, lockable  |
| Assembly position                       | Vertical +/- 5°   |
| Grade of filtration                     | 40 µm   |
| Condensate drain                        | fully automatic   |
| Design structure                        | Filter regulator with pressure gauge  |
| Max. condensate volume                  | 38 ml   |
| Controller function                     | Output pressure constant<br>with secondary exhaust                            |
| Bowl guard                              | Plastic guard   |
| Pressure gauge                          | with pressure gauge   |
| Pressure control range                  | 0.5 ... 12 bar  |
| Inlet pressure 1                        | 2 ... 12 bar  |
| Max. pressure hysteresis                | 0.25 bar  |
| Standard nominal flow rate              | 4,500 l/min   |
| Operating medium                        | Compressed air  |
| Corrosion resistance classification CRC | 2   |
| Storage temperature                     | -10 ... 60 °C   |
| Air purity class at output              | 5:7:- per DIN ISO 8573-1  |
| Medium temperature                      | 5 ... 60 °C   |
| Ambient temperature                     | 5 ... 60 °C   |
| Product weight                          | 875 g   |
| Mounting type                           | with accessories<br>Optional<br>Front panel installation<br>Line installation |
| Pneumatic connection, port 1            | NPT1/2-14   |
| Pneumatic connection, port 2            | NPT1/2-14   |
| Materials information for seals         | NBR   |
| Materials information, housing          | Aluminum die cast   |
| Materials information for bowl          | PC  |
| Material information, isolating disc    | POM   |