

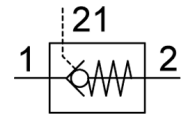
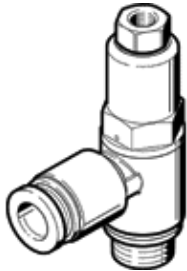
# Piloted check valve HGL-1/4-QS-10

Part number: 530042

★ Core product range

With sealing ring OL, with QS push-in fitting.

FESTO



## Data sheet

Feature	Value
Valve function	piloted non-return function
Pneumatic connection, port 1	QS-10
Pneumatic connection, port 2	G1/4
Pilot air port 21	G1/8
Type of actuation	pneumatic
Mounting type	Threaded with external (male) thread
Operating pressure MPa	0.05 ... 1 MPa
Working pressure	0.5 ... 10 bar
Pilot pressure MPa	0.2 ... 1 MPa
Pilot pressure	2 ... 10 bar 29 ... 145 psi
Ambient temperature	-10 ... 60 °C
Operating medium	Compressed air in accordance with ISO8573-1:2010 [7:4:4]
Maritime classification	see certificate
Assembly position	Any
Standard flow rate 1 -> 2 from 6 to 0 bar	670 l/min
Standard nominal flow rate 1 -> 2 from 6 to 5 bar	400 l/min
Note on operating and pilot medium	Lubricated operation possible (subsequently required for further operation)
Corrosion resistance classification CRC	2 - Moderate corrosion stress
PWIS conformity	VDMA24364-B2-L
Cleanroom class	ISO class 4
Storage temperature	-10 ... 60 °C
Medium temperature	-10 ... 60 °C
Pilot medium	Compressed air in accordance with ISO8573-1:2010 [7:4:4]
Nominal tightening torque	11 Nm
Tolerance for nominal tightening torque	± 10 %
Product weight	45 g
Materials note	Conforms to RoHS
Material seals	NBR
Material hollow bolt	Wrought Aluminum alloy Anodized
Material release ring	POM
Material non-return sleeve	NBR
Material swivel fitting	Zinc die-casting