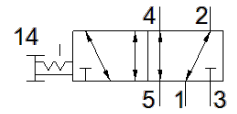


Push-button valve VHEF-P-B52-G18

Part number: 5299710
★ Core product range

FESTO



Data sheet

| Feature | Value |
|---|---|
| Valve function | 5/2 bistable |
| Type of actuation | manual |
| Width | 20 mm |
| Standard nominal flow rate | 750 l/min |
| Operating pressure MPa | -0.095 ... 1 MPa |
| Working pressure | -0.95 ... 10 bar |
| Design structure | Piston slide |
| Nominal size | 5.2 mm |
| Exhaust-air function | throttleable |
| Instructions for use | Actuate only manually |
| Sealing principle | soft |
| Assembly position | Any |
| Manual override | detenting |
| Type of piloting | direct |
| Flow direction | reversible |
| Lap | Positive overlap |
| Max. switching frequency | 0.5 Hz |
| Operating medium | Compressed air in accordance with ISO8573-1:2010 [7:::] |
| Note on operating and pilot medium | Lubricated operation possible (subsequently required for further operation) |
| Corrosion resistance classification CRC | 1 - Low corrosion stress |
| PWIS conformity | VDMA24364-B1/B2-L |
| Medium temperature | -10 ... 60 °C |
| Ambient temperature | -10 ... 60 °C |
| Actuating force | 20 N |
| Release force | 35 N |
| Product weight | 182 g |
| Mounting type | Front panel installation with through hole Optional |
| Pneumatic connection, port 1 | G1/8 |
| Pneumatic connection, port 2 | G1/8 |
| Pneumatic connection, port 3 | G1/8 |
| Pneumatic connection, port 4 | G1/8 |
| Pneumatic connection, port 5 | G1/8 |
| Materials note | Conforms to RoHS |
| Material cover | PA-reinforced |
| Material seals | NBR |
| Material housing | Anodised wrought aluminium alloy |