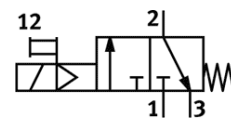
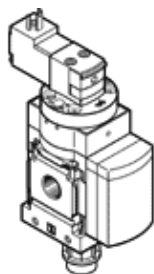


start valve MS6-EE-3/8-V230

Part number: 529837

FESTO

Electrical, direction of flow: from left to right.



Data sheet

Feature	Value
Design structure	Piston slide
Type of actuation	electrical
Exhaust-air function	not throttleable
Manual override	detenting Pushing
Type of reset	mechanical spring
Type of piloting	Piloted
Valve function	3/2 closed, monostable
Working pressure	4 ... 18 bar
C value	22 l/sbar
b value	0.5
Standard nominal flow rate	5,500 l/min
Duty cycle	100%
Characteristic coil data	230 V AC: 50/60 Hz, switching power: 3 VA, holding capacity: 2.4 VA
Permissible voltage fluctuation	-14 % / +10 %
Operating medium	Compressed air in accordance with ISO8573-1:2010 [7:4:4] Inert gases
Note on operating and pilot medium	Lubricated operation possible (subsequently required for further operation)
Corrosion resistance classification CRC	2
Materials note	Free of copper and PTFE Conforms to RoHS
Medium temperature	-10 ... 60 °C
Protection class	IP65
Ambient temperature	-10 ... 60 °C
Authorization	c UL us - Recognized (OL)
Mounting type	Optional Line installation with accessories
Assembly position	Any
Flow direction	non reversible
Product weight	740 g
Pneumatic connection, port 1	G3/8
Pneumatic connection, port 2	G3/8
Pneumatic connection, port 3	G1/2
Pilot air supply	Internal
Electrical connection	Plug Cubic design Per DIN EN 175301-803 Design C
Materials information for seals	NBR
Materials information, housing	Aluminum die cast