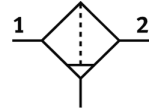


# Filter MS6-LF-3/8-EUM

Part number: 529651

FESTO

40 µm filter, metal bowl, manual condensate drain, direction of flow:  
from left to right.



## Data sheet

Feature	Value
Size	6
Series	MS
Assembly position	Vertical +/- 5°
Grade of filtration	40 µm
Condensate drain	manual rotary
Design structure	Sintered filter with centrifugal separator
Max. condensate volume	38 cm <sup>3</sup>
Bowl guard	integrated as metal shell
Working pressure	0 ... 20 bar
Standard nominal flow rate	3,800 l/min
Operating medium	Compressed air to ISO 8573-1:2010 [-:9:-] Inert gases
Corrosion resistance classification CRC	2
Storage temperature	-10 ... 60 °C
Air purity class at output	Compressed air in accordance with ISO8573-1:2010 [7:8:4]
Medium temperature	-10 ... 60 °C
Ambient temperature	-10 ... 60 °C
Product weight	820 g
Mounting type	Optional Line installation with accessories
Pneumatic connection, port 1	G3/8
Pneumatic connection, port 2	G3/8
Materials note	Free of copper and PTFE Conforms to RoHS
Materials information for seals	NBR
Materials information for filter	PE
Materials information, housing	Aluminum die cast
Materials information for bowl	Wrought Aluminum alloy