

Solenoid valve

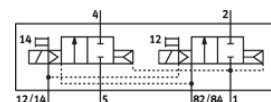
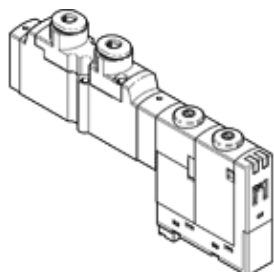
CPPSC1-M1H-I-P-Q3

Part number: 527338
Product to be discontinued

FESTO

For valve terminal CPA-SC, QS push-in connector on top, with plug-in connection.

Type to be discontinued. Available until 2014. See Support Portal for alternative products.



Data sheet

Feature	Value
Valve function	2x2/2 closed, monostable
Type of actuation	electrical
Standard nominal flow rate	130 l/min
Working pressure	3 ... 10 bar
Design structure	Piston slide
Type of reset	Air spring
Protection class	IP20
Authorization	c UL us - Recognized (OL)
Exhaust-air function	throttleable
Sealing principle	soft
Assembly position	Any
Manual override	detenting Pushing
Type of piloting	Piloted
Flow direction	non reversible
Switching position indicator	Yes
Pilot pressure	3 ... 8 bar
b value	0.38
C value	0.55 l/sbar
Switching time off	20 ms
Switching time on	10 ms
Characteristic coil data	24V DC: 1W
Operating medium	Compressed air in accordance with ISO8573-1:2010 [7:4:4]
Note on operating and pilot medium	Lubricated operation possible (subsequently required for further operation)
CE symbol (see declaration of conformity)	according to EU-EMV guideline
Corrosion resistance classification CRC	1
Medium temperature	-5 ... 50 °C
Sound pressure level	95 dB(A)
Pilot medium	Compressed air in accordance with ISO8573-1:2010 [7:4:4]
Ambient temperature	-5 ... 50 °C
Product weight	40 g
Electrical connection	3-pin Plug
Mounting type	with through hole
Pneumatic connection, port 1	Subbase
Pneumatic connection, port 2	QS-3
Pneumatic connection, port 3	Subbase
Pneumatic connection, port 4	QS-3
Pneumatic connection, port 5	Subbase
Materials information for seals	FPM HNBR NBR
Materials information, housing	Aluminum die cast