

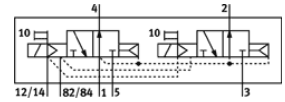
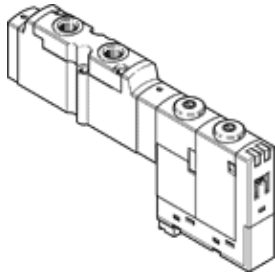
# Solenoid valve

## CPPSC1-M1H-N-P-M5

Part number: 527296  
Product to be discontinued

FESTO

For valve terminal CPA-SC, M5 connection on top, with plug-in connection.  
Type to be discontinued. Available until 2014. See Support Portal for alternative products.



## Data sheet

| Feature                                   | Value   |
|---|---|
| Valve function                            | 2x3/2 open, monostable  |
| Type of actuation                         | electrical  |
| Standard nominal flow rate                | 150 l/min   |
| Working pressure                          | 3 ... 10 bar  |
| Design structure                          | Piston slide  |
| Type of reset                             | Air spring  |
| Protection class                          | IP20  |
| Authorization                             | c UL us - Recognized (OL)   |
| Exhaust-air function                      | throttleable  |
| Sealing principle                         | soft  |
| Assembly position                         | Any   |
| Manual override                           | detenting<br>Pushing  |
| Type of piloting                          | Piloted   |
| Flow direction                            | non reversible  |
| Switching position indicator              | Yes   |
| Pilot pressure                            | 3 ... 8 bar   |
| b value                                   | 0.39  |
| C value                                   | 0.8 l/sbar  |
| Switching time off                        | 20 ms   |
| Switching time on                         | 10 ms   |
| Characteristic coil data                  | 24V DC: 1W  |
| Operating medium                          | Compressed air in accordance with ISO8573-1:2010 [7:4:4]                    |
| Note on operating and pilot medium        | Lubricated operation possible (subsequently required for further operation) |
| CE symbol (see declaration of conformity) | according to EU-EMV guideline   |
| Corrosion resistance classification CRC   | 2   |
| Medium temperature                        | -5 ... 50 °C  |
| Sound pressure level                      | 95 dB(A)  |
| Pilot medium                              | Compressed air in accordance with ISO8573-1:2010 [7:4:4]                    |
| Ambient temperature                       | -5 ... 50 °C  |
| Product weight                            | 40 g  |
| Electrical connection                     | 3-pin<br>Plug   |
| Mounting type                             | with through hole   |
| Pneumatic connection, port 1              | Subbase   |
| Pneumatic connection, port 2              | M5  |
| Pneumatic connection, port 3              | Subbase   |
| Pneumatic connection, port 4              | M5  |
| Pneumatic connection, port 5              | Subbase   |
| Materials information for seals           | FPM<br>HNBR<br>NBR  |
| Materials information, housing            | Aluminum die cast   |