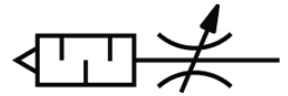
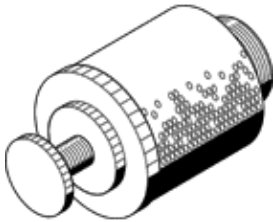


# Flow control/silencer GRU-1/4

Part number: 4579

FESTO



## Data sheet

Feature	Value
Valve function	Flow control – silencer function
Pneumatic connection, port 1	G1/4
Adjusting element	Knurled screw
Mounting type	Threaded
Standard nominal flow rate in flow control direction	320 l/min
Working pressure	0 ... 10 bar
Ambient temperature	-10 ... 60 °C
Operating medium	Compressed air in accordance with ISO8573-1:2010 [7:-:-]
Note on operating and pilot medium	Lubricated operation possible (subsequently required for further operation)
Medium temperature	-10 ... 60 °C
Product weight	40 g
Materials information for screw-in stud	POM
Regulating screw material data	Steel Galvanized