

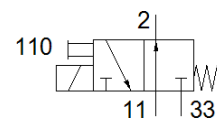
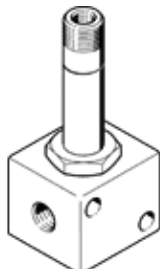
Solenoid valve

MOFH-3-M5

Part number: 4543

FESTO

With manual override, without solenoid coil or socket. Solenoid coil and socket should be ordered separately.



Data sheet

Feature	Value
Valve function	3/2 open, monostable
Type of actuation	electrical
Standard nominal flow rate	46 l/min
Operating pressure MPa	0 ... 0.65 MPa
Working pressure	0 ... 6.5 bar
Design structure	Poppet seat
Type of reset	mechanical spring
Authorization	c UL us - Recognized (OL)
Nominal size	1.5 mm
Exhaust-air function	not throttleable
Sealing principle	soft
Assembly position	Any
Manual override	detenting
Type of piloting	direct
Flow direction	non reversible
Switching time off	8.5 ms
Switching time on	12 ms
Operating medium	Compressed air in accordance with ISO8573-1:2010 [7:4:4]
Note on operating and pilot medium	Lubricated operation possible (subsequently required for further operation)
PWIS conformity	VDMA24364-B2-L
Medium temperature	-15 ... 60 °C
Ambient temperature	-15 ... 40 °C
Mounting type	with through hole
Pneumatic connection, port 1	M5
Pneumatic connection, port 2	M5
Pneumatic connection, port 3	M5