

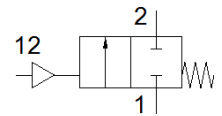
# Angle seat valve

## VZXF-L-M22C-M-A-N34-180-M1-V4B2T-50-16

Part number: 3539746

FESTO

Pneumatically actuated angle seat valve in stainless steel. Over seat version, safety position closed, NPT-thread, nominal width 3/4".



### Data sheet

| Feature                                 | Value   |
|---|---|
| Design structure                        | Poppet valve with piston actuator   |
| Type of actuation                       | pneumatic   |
| Sealing principle                       | soft  |
| Assembly position                       | Any   |
| Mounting type                           | Line installation   |
| Line connection                         | Threaded coupling 3/4 NPT to ANSI/ASME B 1.20.1                               |
| Nominal size                            | 18 mm   |
| Valve function                          | 2/2 closed, monostable  |
| Flow direction                          | non reversible  |
| Pressure of medium                      | 0 ... 1.6 MPa   |
| Medium pressure                         | 0 ... 16 bar  |
| Nominal pressure of process valve       | 40  |
| Exhaust-air function                    | not throttleable  |
| Type of reset                           | mechanical spring   |
| Type of piloting                        | With external control   |
| Pneumatic connection                    | Female thread G1/8  |
| Operating pressure MPa                  | 0.6 ... 1 MPa   |
| Working pressure                        | 6 ... 10 bar  |
| Operating pressure                      | 87 ... 145 psi  |
| Medium                                  | Vapour<br>Inert gases<br>Filtered compressed air, degree of filtration 200 µm |
| Flow direction                          | Above valve seat, for gaseous media   |
| Operating medium                        | Compressed air in accordance with ISO8573-1:2010 [7:4:4]                      |
| Max. viscosity                          | 600 mm <sup>2</sup> /s  |
| Medium temperature                      | -40 ... 200 °C  |
| Ambient temperature                     | -10 ... 60 °C   |
| Flow rate Kv                            | 7.5 m <sup>3</sup> /h   |
| Materials note                          | Conforms to RoHS  |
| PWIS conformity                         | VDMA24364 zone III  |
| Material process valve housing          | Stainless steel casting   |
| Material number, process valve housing  | 1.4408  |
| Material spindle seal                   | PTFE  |
| Material seat seal                      | PTFE  |
| Product weight                          | 1,400 g   |
| Corrosion resistance classification CRC | 2 - Moderate corrosion stress   |
| Material drive housing                  | Nickel-plated brass   |