

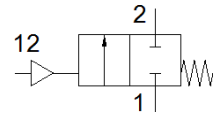
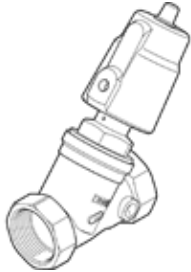
Angle seat valve

VZXF-L-M22C-M-B-G112-350-H3B1V-50-6-C

Part number: 3539368

FESTO

Pneumatically actuated angle seat valve in red brass. Under seat version, safety position closed, G-thread, PWIS-free, nominal width 1 1/2".



Data sheet

| Feature | Value |
|--|--|
| Design structure | Poppet valve with piston actuator |
| Type of actuation | pneumatic |
| Sealing principle | soft |
| Assembly position | Any |
| Mounting type | Line installation |
| Line connection | G1½ threaded collar to DIN ISO 228 |
| Nominal size | 35 mm |
| Valve function | 2/2 closed, monostable |
| Flow direction | non reversible |
| Pressure of medium | 0 ... 0.6 MPa |
| Medium pressure | 0 ... 6 bar |
| Nominal pressure of process valve | 16 |
| Exhaust-air function | not throttleable |
| Type of reset | mechanical spring |
| Type of piloting | With external control |
| Pneumatic connection | Female thread G1/8 |
| Operating pressure MPa | 0.6 ... 1 MPa |
| Working pressure | 6 ... 10 bar |
| Operating pressure | 87 ... 145 psi |
| Medium | Vapour Mineral oil-based hydraulic oil Inert gases Mineral oil Water Filtered compressed air, degree of filtration 200 µm Neutral fluids |
| Flow direction | Below valve seat, for gaseous and liquid media |
| Operating medium | Compressed air in accordance with ISO8573-1:2010 [7:4:4] |
| Max. viscosity | 600 mm ² /s |
| Medium temperature | -10 ... 80 °C |
| Ambient temperature | -10 ... 60 °C |
| Flow rate Kv | 16.5 m ³ /h |
| Materials note | Conforms to RoHS |
| PWIS conformity | VDMA24364-B1/B2-L |
| Material process valve housing | Gunmetal (red brass) |
| Material number, process valve housing | CC499K |
| Material spindle seal | FPM |
| Material seat seal | FPM |
| Product weight | 2,300 g |
| CE symbol (see declaration of conformity) | according to EU printing device guideline |
| UKCA marking (see declaration of conformity) | UK regulation for pressure equipment |
| Corrosion resistance classification CRC | 1 - Low corrosion stress |
| Material drive housing | Brass |