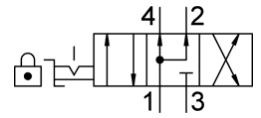
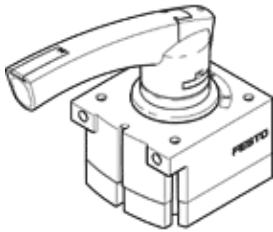


Hand lever valve VHER-P-H-B43U-B-G18

Part number: 3488217

FESTO



Data sheet

Feature	Value
Valve function	4/3-way, pressurised
Type of actuation	manual
Width	42 mm
Standard nominal flow rate	800 l/min
Working pressure	0 ... 10 bar
Note on working pressure	Vacuum operation at port 3 only In the case of dual-pressure operation, the pressure at port 1 must be higher than at port 3
Design structure	Rotary slide valve
Nominal size	6 mm
Exhaust-air function	throttleable
Instructions for use	Actuate only manually
Actuator lock	with accessories, lockable
Sealing principle	Hard
Type of piloting	direct
Flow direction	non reversible
Freedom from overlap	Yes
Switching position indicator	with accessories
Operating medium	Compressed air in accordance with ISO8573-1:2010 [7:4:4]
Note on operating and pilot medium	Lubricated operation possible (subsequently required for further operation)
Corrosion resistance classification CRC	2 - Moderate corrosion stress
PWIS conformity	VDMA24364-B1/B2-L
Medium temperature	-20 ... 80 °C
Ambient temperature	-20 ... 80 °C
Actuation torque	0.9 Nm
Product weight	125 g
Mounting type	Front panel installation with through hole Optional
Pneumatic connection, port 1	G1/8
Pneumatic connection, port 2	G1/8
Pneumatic connection, port 3	G1/8
Pneumatic connection, port 4	G1/8
Materials note	Conforms to RoHS
Material seals	NBR
Material housing	PA
Material lever	PA