

Hand lever valve HSO-4/3-M5

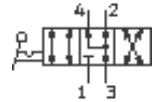
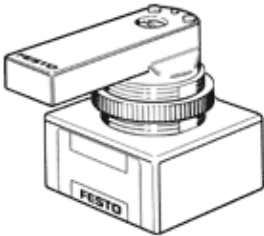
Part number: 34539

FESTO

4/3-way valve with hand lever, open in mid position.

Discontinued, available through 2006

This type is suitable for vacuum operation. Vacuum connections to 1 (P) and 3 (R).



Data sheet

Feature	Value
Standard nominal flow rate	130 l/min
Pneumatic connection, port 2	M5
Pneumatic connection, port 4	M5
Operating pressure	-0.95 ... 10 bar
Design structure	Rotary slide valve
Nominal size	3.6 mm
Medium temperature	-20 ... 60 °C
Ambient temperature	-20 ... 60 °C
Actuation torque	0.3 Nm
Product weight	0.035 kg
Mounting type	Front panel installation
Pneumatic connection, port 1	M5
Pneumatic connection, port 3	M5
Materials information for seals	NBR
Materials information, housing	Plastic