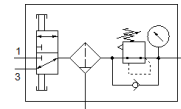
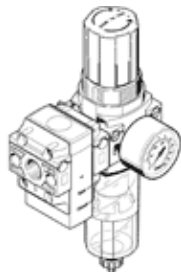


# Service unit combination LFR-1/4-DB-7-MINI-KC-MPA

Part number: 3339285  
Product to be discontinued

FESTO

Output pressure max. 7 bar, with pressure gauge, 40 µ filtration grade.  
Type to be discontinued. Available until 2024. See Support Portal for alternative products.



## Data sheet

Feature	Value
Size	Mini
Width	108 mm
Exhaust-air function	not throttleable
Series	DB
Type of actuation	manual
Actuator lock	Padlock (optional) Rotary knob with lock
Assembly position	Vertical +/- 5°
Grade of filtration	40 µm
Condensate drain	manual rotary
Design structure	On-off valve/filter regulator
Max. condensate volume	13 ml
Controller function	Output pressure constant with secondary exhaust with return flow Without primary pressure compensation
Pressure gauge	with pressure gauge
Operating pressure MPa	0.15 ... 1 MPa
Working pressure	1.5 ... 10 bar
Pressure regulation range	0.5 ... 7 bar
Max. pressure hysteresis	0.5 bar
Max. standard flow rate	2,500 l/min
Standard nominal flow rate	1,900 l/min
Operating medium	Compressed air to ISO 8573-1:2010 [7:9:4]
Note on operating and pilot medium	Lubricated operation not possible
Corrosion resistance classification CRC	1 - Low corrosion stress
PWIS conformity	VDMA24364-B1/B2-L
Storage temperature	-5 ... 50 °C
Air purity class at output	Compressed air in accordance with ISO8573-1:2010 [7:8:4]
Medium temperature	-5 ... 50 °C
Ambient temperature	-5 ... 50 °C
Product weight	245 g
Mounting type	Line installation with through hole With mounting bracket Optional
Pressure gauge connection	G1/8
Pneumatic connection, port 1	G1/4
Pneumatic connection, port 2	G1/4
Materials note	Conforms to RoHS
Material seals	NBR
Material on-off valve seals	FPM

Feature	Value
Material rotary knob	POM
Material filter	PE
Material housing	PA-reinforced
Material Piston slide	POM
Material bowl	PC