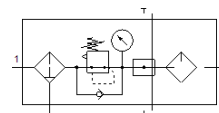
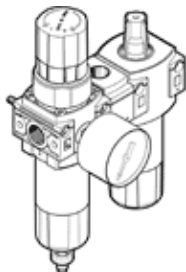


# Service unit combination FRC-1/4-DB-7-MINI-KA-MPA

Part number: 3339282  
Product to be discontinued

FESTO

Output pressure max. 7 bar, with pressure gauge, 40 µ filtration grade.  
Type to be discontinued. Available until 2024. See Support Portal for alternative products.



## Data sheet

Feature	Value
Size	Mini
Width	108 mm
Exhaust-air function	not throttleable
Series	DB
Actuator lock	Rotary knob with lock
Assembly position	Vertical +/- 5°
Condensate drain	manual rotary
Design structure	Filter regulator/distributor module/lubricator
Max. condensate volume	13 ml
Grade of filtration	40 µm
Controller function	Output pressure constant with secondary exhaust with return flow Without primary pressure compensation
Pressure gauge	with pressure gauge
Operating pressure MPa	0.15 ... 1 MPa
Working pressure	1.5 ... 10 bar
Pressure regulation range	0.5 ... 7 bar
Max. pressure hysteresis	0.5 bar
Max. standard flow rate	2,500 l/min
Standard nominal flow rate	700 l/min
Operating medium	Compressed air to ISO 8573-1:2010 [7:9:4]
Note on operating and pilot medium	Lubricated operation not possible
Approved oils	Festo special oil in 1-liter containers Order code: 152 811 OFSW-32 ARAL Vitam GF 32 ESSO Nuto H 32 MOBIL DTE 24 SHELL Tellus Oil DO 32 Range of viscosity 32mm <sup>2</sup> /s at 40°C ISO class VG 32 to ISO 3448
Corrosion resistance classification CRC	1 - Low corrosion stress
PWIS conformity	VDMA24364-B1/B2-L
Storage temperature	-5 ... 50 °C
Air purity class at output	Compressed air to ISO 8573-1:2010 [7:9:-]
Medium temperature	-5 ... 50 °C
Oil viscosity	ISO VG 32
Ambient temperature	-5 ... 50 °C
Product weight	285 g
Mounting type	Line installation with through hole With mounting bracket

Feature	Value
	Optional
Pressure gauge connection	G1/8
Pneumatic connection, port 1	G1/4
Pneumatic connection, port 2	G1/4
Pneumatic connection, port 3	G1/4
Materials note	Conforms to RoHS
Material seals	NBR
Material rotary knob	POM
Material filter	PE
Material housing	PA-reinforced
Material bowl	PC