

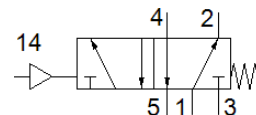
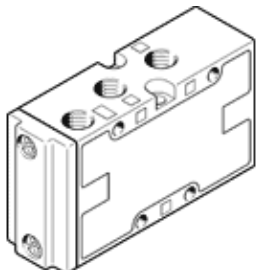
Pneumatic valve

VL-5-1/8-B

Part number: 31000
Classic - do not use for new projects

FESTO

5/2-way function, pneumatically actuated, with spring return
Modern alternatives can be found by entering the first four characters of the type code in the search field.



Data sheet

Feature	Value
Valve function	5/2 monostable
Type of actuation	pneumatic
Width	26 mm
Standard nominal flow rate	750 l/min
Operating pressure MPa	0 ... 1 MPa
Working pressure	0 ... 10 bar
Design structure	Poppet seat
Type of reset	mechanical spring
Nominal size	5 mm
Grid dimension	27 mm
Exhaust-air function	throttleable
Sealing principle	soft
Assembly position	Any
Manual override	None
Type of piloting	direct
Pilot air supply	external
Flow direction	non reversible
Lap	Underlap
Pilot pressure MPa	0.15 ... 0.8 MPa
Pilot pressure	1.5 ... 8 bar
Max. switching frequency	3 Hz
Switching time off	10 ms
Switching time on	2 ms
Operating medium	Compressed air in accordance with ISO8573-1:2010 [7:4:4]
Note on operating and pilot medium	Lubricated operation possible (subsequently required for further operation)
Corrosion resistance classification CRC	1 - Low corrosion stress
PWIS conformity	VDMA24364-B1/B2-L
Storage temperature	-40 ... 60 °C
Medium temperature	-10 ... 60 °C
Pilot medium	Compressed air in accordance with ISO8573-1:2010 [7:4:4]
Ambient temperature	-10 ... 60 °C
Product weight	170 g
Mounting type	On PR manifold with through hole Optional
Pilot air port 14	G1/8
Pneumatic connection, port 1	G1/8
Pneumatic connection, port 2	G1/8
Pneumatic connection, port 3	G1/8
Pneumatic connection, port 4	G1/8
Pneumatic connection, port 5	G1/8
Materials note	Conforms to RoHS
Material seals	NBR TPE-U(PU)
Material housing	Aluminum die cast