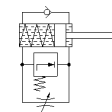


# Shock absorber DYSC-20-18-Y1F

Part number: 2479149

FESTO



## Data sheet

| Feature                                 | Value                           |
|---|---------------------------------|
| Size                                    | 20                              |
| Stroke                                  | 18 mm                           |
| Cushioning                              | self-adjusting                  |
| Assembly position                       | Any                             |
| Position detection                      | No                              |
| Max. impact speed                       | 3 m/s                           |
| Reset time short                        | 0.3 s                           |
| Reset time long                         | 1 s                             |
| Mode of operation                       | single-acting<br>pushing action |
| Corrosion resistance classification CRC | 2 - Moderate corrosion stress   |
| PWIS conformity                         | VDMA24364-B2-L                  |
| Ambient temperature                     | -10 ... 80 °C                   |
| Cushioning length                       | 16 mm                           |
| Max. stop force                         | 3,000 N                         |
| Max. energy consumption per stroke      | 38 J                            |
| Max. energy consumption per hour        | 80,000 J                        |
| Max. residual energy                    | 0.32 J                          |
| Reset force                             | 10 N                            |
| Product weight                          | 370 g                           |
| Mounting type                           | with lock nut                   |
| Materials note                          | Conforms to RoHS                |
| Material seals                          | NBR                             |
| Material housing                        | steel, galvanized               |
| Material piston rod                     | High alloy steel                |