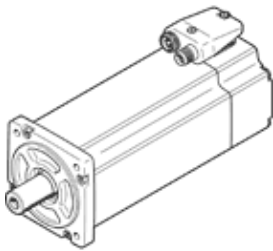


Servomotor EMME-AS-80-S-HS-AMB

Part number: 2093139
Product to be discontinued

FESTO

Without gear unit/with brake.



Data sheet

Feature	Value
Ambient temperature	-10 ... 40 °C
Storage temperature	-20 ... 70 °C
Relative air humidity	0 - 90 %
Conforms to standard	IEC 60034
Insulation protection class	F
Rating class according to EN 60034-1	S1
Protection class	IP21
Electrical connector system	Plug
Materials note	Conforms to RoHS
Corrosion resistance classification CRC	0 - No corrosion stress
PWIS conformity	VDMA24364 zone III
Authorization	RCM Mark c UL us - Recognized (OL)
CE symbol (see declaration of conformity)	according to EU-EMV guideline according to EU low voltage guideline in accordance with EU RoHS directive
UKCA marking (see declaration of conformity)	To UK instructions for electrical equipment To UK instructions for EMC To UK RoHS instructions
Nominal operating voltage DC	565 V
Nominal voltage DC	565 V
Type of winding switch	Star inside
Number of pole pairs	3
Standstill torque	2.8 Nm
Nominal torque	2.3 Nm
Peak torque	11.2 Nm
Nominal rotary speed	3,000 1/min
Max. speed	4,192 1/min
Nominal motor power	720 W
Continuous open-circuit current	1.8 A
Nominal motor current	1.6 A
Peak current	7.2 A
Motor constant	1.438 Nm/A
Voltage constant, phase-to-phase	95.3 mVmin
Phase-phase winding resistance	14.2 Ohm
Phase-phase winding inductance	30 mH
Overall mass moment of inertia at power take-off	1.68 kgcm ²
Product weight	3,700 g
Permissible axial shaft load	70 N
Permissible radial shaft load	350 N
Rotor position sensor	Absolute multi-turn encoder
Rotary position encoder interface	HIPERFACE®
Rotary position encoder measuring principle	Capacitive
Rotor position encoder, sinusoidal/cosinusoidal periods per revolution	16

Feature	Value
Rotor position encoder, typical resolution	12 Bit
Rotor position encoder, typical angular accuracy	20 arcmin
Brake holding torque	4.5 Nm
Operating voltage DC for brake	24 V
Power consumption, brake	12 W
Mass moment of inertia of brake	0.222 kgcm ²
Switching cycles, holding brake	5 million idle actuations (without work of friction!)
MTTF, subcomponent	797 years, holding brake
MTTFd, subcomponent	271 years, rotary position encoder
Energy efficiency	ENEFF (CN) / Class 2