

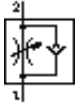
One-way flow control valve GRLA-E-M5-QS-4

Part number: 197480

FESTO

For exhaust air flow control, with swivel joint.

This product is only available if ordered from Festo Korea Co. Ltd.



Data sheet

Feature	Value
Valve function	One-way flow control function
Pneumatic connection, port 2	M5
Mounting type	Threaded
Working pressure	0 ... 8 bar
Ambient temperature	0 ... 60 °C
Operating medium	Filtered compressed air
Medium temperature	0 ... 60 °C
Product weight	9.9 g
Materials information for screw-in stud	Brass
Materials note	Contains PWIS substances
Materials information for seals	NBR