

Solenoid valve

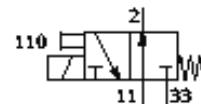
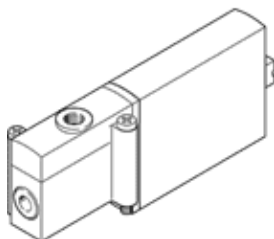
MHP2-M5H-3/2O-M5-HC

Part number: 197412

FESTO

Semi in-line valve for individual and manifold mounting, fast switching, with plug connector at rear

Discontinued, available through 2007



Data sheet

Feature	Value
Valve function	3/2 offen monostabil
Type of actuation	electrical
Width	10 mm
Standard nominal flow rate	100 l/min
Pneumatic working line	M5
Operating voltage	12V DC
Operating pressure	-0.9 ... 8 bar
Design structure	Pressure-relieved poppet valve
Type of reset	mechanical spring
Protection class	IP40
Authorisation	c UL us - Recognized (OL)
Nominal size	2 mm
Grid dimension	14 mm
Exhaust-air function	throttleable
Sealing principle	soft
Assembly position	Any
Manual override	Pushing
Type of piloting	direct
Flow direction	reversible with restrictions
Maximum switching frequency	130 Hz
Switching time off	7 ms
Switching time on	7 ms
Duty cycle	100%
Characteristic coil data	12V DC: 2,88W
Permissible voltage fluctuation	+/- 10 %
Operating medium	Filtered, unlubricated compressed air, 40 µm filtration Filtered, lubricated compressed air, 40 µm filtration
Corrosion resistance classification CRC	2
Medium temperature	-5 ... 40 °C
Ambient temperature	-5 ... 40 °C
Product weight	50 g
Mounting type	On subbase
Pneumatic connection, 11	Subbase
Pneumatic connection, port 2	M5
Pneumatic connection, 33	Subbase
Materials note	Free of copper and PTFE
Materials information for seals	HNBR NBR
Materials information, housing	Zinc die-casting coated
Screw material data	Steel Galvanized