

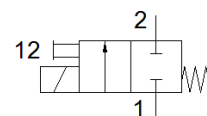
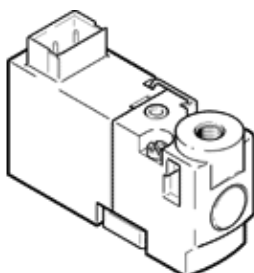
# Solenoid valve

## MHP1-M1H-2/2G-M3-TC

Part number: 197050

FESTO

Semi in-line valve for individual and manifold mounting, very compact, with plug connector on top



## Data sheet

Feature	Value
Valve function	2/2 closed, monostable
Type of actuation	electrical
Width	10 mm
Standard nominal flow rate	14 l/min
Operating pressure MPa	-0.09 ... 0.2 MPa
Working pressure	-0.9 ... 2 bar
Operating pressure	-13.05 ... 29 psi
Design structure	Poppet valve with spring return
Type of reset	mechanical spring
Protection class	IP40
Authorization	c UL us - Recognized (OL)
Certificate issuing department	UL MH19482
Nominal size	0.9 mm
Grid dimension	10 mm
Exhaust-air function	not throttleable
Sealing principle	soft
Assembly position	Any
Manual override	Pushing
Type of piloting	direct
Flow direction	non reversible
Valve position identification	Label
Lap	Underlap
Note on forced dynamisation	Switching frequency at least once a week
Suitability for vacuum	Yes
Maximum switching frequency	20 Hz
Switching time off	5 ms
Switching time on	4 ms
Duty cycle	100 %
Electrical power consumption	1 W
Max. positive test pulse with logic 0	500 µs
Max. negative test pulse with logic 1	400 µs
Characteristic coil data	24 V DC: 1 W
Permissible voltage fluctuation	+/- 10 %
Operating medium	Compressed air in accordance with ISO8573-1:2010 [7:4:4]
Note on operating and pilot medium	Lubricated operation possible (subsequently required for further operation)
Vibration resistance	Transport application test at severity level 2 in accordance with FN 942017-4 and EN 60068-2-6
Shock resistance	Shock test with severity level 2 in accordance with FN 942017-5 and EN 60068-2-27
Corrosion resistance classification CRC	2 - Moderate corrosion stress
PWIS conformity	VDMA24364-B2-L
Storage temperature	-20 ... 60 °C

Feature	Value
Medium temperature	-5 ... 40 °C
Ambient temperature	-5 ... 40 °C
Product weight	10 g
Electrical connection	Plug
Mounting type	On subbase with through hole
Pneumatic connection, port 1	Subbase
Pneumatic connection, port 2	M3
Materials note	Conforms to RoHS
Material seals	FPM HNBR NBR
Material housing	PA-reinforced PPS-reinforced