

Solenoid valve

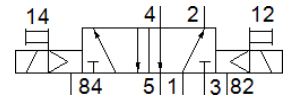
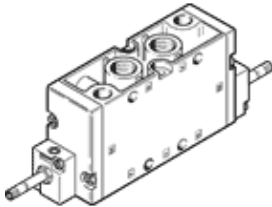
JMFH-5-3/8-B

Part number: 19700
Classic - do not use for new projects

FESTO

With manual overrides, without solenoid coils or sockets. Solenoid coils and sockets should be ordered separately.

Modern alternatives can be found by entering the first four characters of the type code in the search field.



Data sheet

Feature	Value
Valve function	5/2 bistable
Type of actuation	electrical
Width	40 mm
Standard nominal flow rate	2,000 l/min
Operating pressure MPa	0.2 ... 0.8 MPa
Working pressure	2 ... 8 bar
Design structure	Piston slide
Type of reset	mechanical spring
Nominal size	12 mm
Grid dimension	41 mm
Exhaust-air function	throttleable
Sealing principle	soft
Assembly position	Any
Manual override	Pushing
Type of piloting	Piloted
Pilot air supply	Internal
Flow direction	non reversible
Lap	Positive overlap
Max. switching frequency	3 Hz
Switching time reversal	12 ms
Max. positive test pulse with logic 0	2,200 µs
Max. negative test pulse with logic 1	3,700 µs
Operating medium	Compressed air in accordance with ISO8573-1:2010 [7:4:4]
Note on operating and pilot medium	Lubricated operation possible (subsequently required for further operation)
Corrosion resistance classification CRC	1 - Low corrosion stress
PWIS conformity	VDMA24364-B1/B2-L
Storage temperature	-40 ... 60 °C
Medium temperature	-10 ... 60 °C
Ambient temperature	-5 ... 40 °C
Product weight	650 g
Electrical connection	Via F coil, must be ordered separately
Mounting type	On PR manifold with through hole Optional
Pilot exhaust port 82	M5
Pilot exhaust port 84	M5
Pneumatic connection, port 1	G3/8
Pneumatic connection, port 2	G3/8
Pneumatic connection, port 3	G3/8
Pneumatic connection, port 4	G3/8
Pneumatic connection, port 5	G3/8
Materials note	Conforms to RoHS
Material seals	NBR
Material housing	Aluminum die cast