

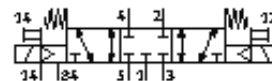
Solenoid valve

CDVI5.0-MT2H-5/3GS

Part number: 196651

FESTO

For valve manifold CDVI, Clean Design.



Data sheet

Feature	Value
Valve function	5/3 closed
Type of actuation	electrical
Standard nominal flow rate	650 l/min
Working pressure	-0.9 ... 10 bar
Design structure	Piston slide
Type of reset	mechanical spring
Nominal size	5 mm
Exhaust-air function	throttleable
Sealing principle	soft
Manual override	Pushing
Type of piloting	Piloted
Pilot air supply	external
Flow direction	reversible
Note on forced dynamisation	Switching frequency min. 1/month
Pilot pressure	3 ... 8 bar
b value	0.5
C value	2.55 l/sbar
Switching time off	25 ms
Switching time on	12 ms
Switching time reversal	17 ms
Operating medium	Compressed air in accordance with ISO8573-1:2010 [7:4:4]
Note on operating and pilot medium	Lubricated operation possible (subsequently required for further operation)
Corrosion resistance classification CRC	3 - High corrosion stress
PWIS conformity	VDMA24364-B2-L
Medium temperature	-5 ... 50 °C
Ambient temperature	-5 ... 50 °C
Product weight	210 g
Mounting type	Threaded
Pilot exhaust port 82/84	Subbase
Pneumatic connection, port 1	Subbase
Pneumatic connection, port 2	Subbase
Pneumatic connection, port 3	Subbase
Pneumatic connection, port 4	Subbase
Pneumatic connection, port 5	Subbase
Materials note	Conforms to RoHS
Material seals	NBR TPE-O
Material housing	Aluminum die cast