

One-way flow control valve GR-QS-1/2

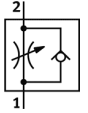
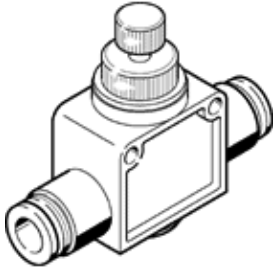
Part number: 192756

FESTO

With flow adjustable in one direction.

This product is only available if ordered from the Festo Corporation, USA.

Type to be discontinued. Available until 2011.



Data sheet

Feature	Value
Valve function	One-way flow control function
Pneumatic connection, port 1	QS-1/2
Pneumatic connection, port 2	QS-1/2
Adjusting element	Knurled screw
Mounting type	Optional with through hole Line installation
Standard nominal flow rate in flow control direction	743 l/min
Standard nominal flow rate in non-return direction	463 l/min
Working pressure	1 ... 9 bar
Ambient temperature	0 ... 60 °C
Materials information, housing	PBT-reinforced
Operating medium	Compressed air, filtered, unlubricated Filtered, lubricated air
Assembly position	Any
Medium temperature	0 ... 60 °C
Product weight	113 g
Release ring material data	POM
Regulating screw material data	Brass Nickel plated