

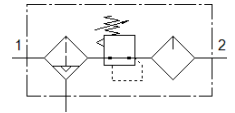
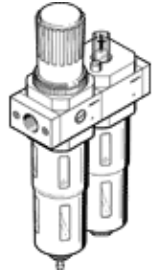
Service unit FRC-1/2-D-7-O-MIDI-A

Part number: 192645
Classic - do not use for new projects

Filter regulator/lubricator combination, maximum output pressure 7 bar, 40 µm filter, with metal bowl guard.

With automatic condensate drain. Without pressure gauge.

Modern alternatives can be found by entering the first four characters of the type code in the search field.



Data sheet

Feature	Value
Size	Midi
Series	D
Actuator lock	Rotary knob with lock
Assembly position	Vertical +/- 5°
Condensate drain	fully automatic
Design structure	Filter regulator without pressure gauge proportional standard mist lubricator
Max. condensate volume	43 cm ³
Grade of filtration	40 µm
Bowl guard	Metal bowl guard
Pressure gauge	Prepared for G1/4
Working pressure	2 ... 12 bar
Pressure regulation range	0.5 ... 7 bar
Max. pressure hysteresis	0.2 bar
Standard nominal flow rate	2,800 l/min
Operating medium	Compressed air to ISO 8573-1:2010 [7:9:-] Inert gases
Note on operating and pilot medium	Lubricated operation possible (subsequently required for further operation)
PWIS conformity	VDMA24364-B1/B2-L
Air purity class at output	Compressed air to ISO 8573-1:2010 [7:8:-] Inert gases
Medium temperature	-10 ... 60 °C
Ambient temperature	-10 ... 60 °C
Product weight	1,440 g
Mounting type	Line installation with accessories
Pneumatic connection, port 1	G1/2
Pneumatic connection, port 2	G1/2
Materials note	Conforms to RoHS
Material housing	Zinc die-casting
Material bowl	PC