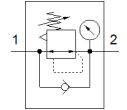
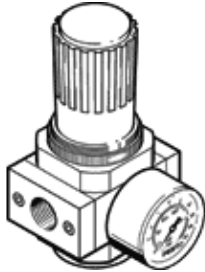


# Pressure regulator LR-3/4-D-7-I-MIDI

Part number: 192317  
Classic - do not use for new projects

FESTO

With increased return exhaust, working pressure up to 7 bar.  
Modern alternatives can be found by entering the first four characters of the type code in the search field.



## Data sheet

| Feature                            | Value  |
|------------------------------------|--|
| Size                               | Midi   |
| Series                             | D  |
| Actuator lock                      | Rotary knob with lock  |
| Assembly position                  | Any  |
| Design structure                   | directly-controlled diaphragm regulator  |
| Controller function                | Output pressure constant<br>with initial pressure compensation<br>with secondary exhaust<br>with return flow |
| Pressure gauge                     | with pressure gauge  |
| Working pressure                   | 0 ... 16 bar   |
| Pressure regulation range          | 0.5 ... 7 bar  |
| Max. pressure hysteresis           | 0.2 bar  |
| Standard nominal flow rate         | 4,500 l/min  |
| Operating medium                   | Compressed air in accordance with ISO8573-1:2010 [7:4:4]<br>Inert gases                                      |
| Note on operating and pilot medium | Lubricated operation possible (subsequently required for further operation)                                  |
| PWIS conformity                    | VDMA24364-B1/B2-L  |
| Air purity class at output         | Compressed air in accordance with ISO8573-1:2010 [7:4:4]<br>Inert gases                                      |
| Medium temperature                 | -10 ... 60 °C  |
| Ambient temperature                | -10 ... 60 °C  |
| Product weight                     | 720 g  |
| Mounting type                      | Front panel installation<br>Line installation<br>with accessories  |
| Pneumatic connection, port 1       | G3/4   |
| Pneumatic connection, port 2       | G3/4   |
| Materials note                     | Conforms to RoHS   |
| Material of connecting plate       | Zinc die-casting   |
| Material seals                     | NBR  |
| Material housing                   | Zinc die-casting   |