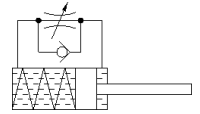
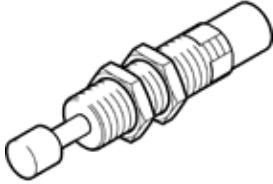


Shock absorber YSRW-5-8

Part number: 191192

FESTO

Self-adjusting, with progressive characteristic curve.



Data sheet

| Feature | Value |
|---|---------------------------------------|
| Size | 5 |
| Stroke | 8 mm |
| Cushioning | self-adjusting Soft characteristic |
| Assembly position | Any |
| Position detection | No |
| Max. impact speed | 2 m/s |
| Reset time short | 0.2 s |
| Reset time long | 1 s |
| Mode of operation | single-acting pushing action |
| Corrosion resistance classification CRC | 2 - Moderate corrosion stress |
| PWIS conformity | VDMA24364-B2-L |
| Ambient temperature | -10 ... 80 °C |
| Cushioning length | 8 mm |
| Max. stop force | 200 N |
| Max. energy consumption per stroke | 1.3 J |
| Max. energy consumption per hour | 10,000 J |
| Max. residual energy | 0.01 J |
| Reset force | 0.9 N |
| Product weight | 8 g |
| Mounting type | with lock nut |
| Materials note | Conforms to RoHS |
| Material seals | NBR |
| Material housing | High alloy steel |
| Material piston rod | High alloy steel |