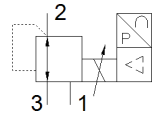


# Proportional pressure regulator MPPE-3-1/8-10-010

Part number: 187348

FESTO



## Data sheet

Feature	Value
Nominal diameter, pressurization	3 mm
Nominal diameter, exhaust	2 mm
Type of actuation	electrical
Sealing principle	soft
Assembly position	Any
Design structure	directly-controlled piston regulator
Short circuit strength	for all electrical connections
Safety instructions	Safety position of MPPE5
Polarity protected	for all electrical connections
Valve function	3-way closed proportional-pressure regulator
Operating pressure MPa	≤ 1.2 MPa
Working pressure	≤ 12 bar
Pressure regulation range MPa	0 ... 1 MPa
Pressure regulation range	0 ... 10 bar
Inlet pressure 1	11 ... 12 bar
Supply pressure 1 MPa	1.1 ... 1.2 MPa
Max. pressure hysteresis (MPa)	0.001 MPa
Max. pressure hysteresis	0.01 bar
Switching time off	290 ms
Switching time on	200 ms
Operating voltage range DC	18 ... 30 V
Nominal operating voltage DC	24 V
Residual ripple	10 %
SETPOINT/ACTUAL values	Voltage type 0 - 10 V
Operating medium	Compressed air in accordance with ISO8573-1:2010 [7:4:4] Inert gases
Note on operating and pilot medium	Lubricated operation possible (subsequently required for further operation)
Authorization	RCM Mark
KC mark	KC-EMV
CE symbol (see declaration of conformity)	according to EU-EMV guideline in accordance with EU RoHS directive
UKCA marking (see declaration of conformity)	To UK instructions for EMC To UK RoHS instructions
Corrosion resistance classification CRC	2 - Moderate corrosion stress
PWIS conformity	VDMA24364-B2-L
Medium temperature	0 ... 60 °C
Protection class	IP65
Ambient temperature	0 ... 50 °C
Product weight	915 g
Electrical connection	8-pin M16x0,75 Plug to DIN 45326 Round design
Mounting type	with through hole

Feature	Value
Pneumatic connection, port 1	G1/8
Pneumatic connection, port 2	G1/8
Pneumatic connection, port 3	G1/8
Materials note	Conforms to RoHS
Material housing	Wrought Aluminum alloy
Material membrane	NBR