

start valve

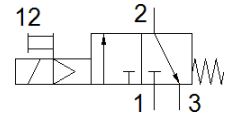
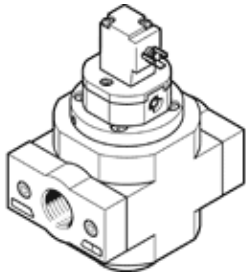
HEE-1/2-D-MAXI-230

Part number: 186519
Classic - do not use for new projects

FESTO

Used in conjunction with service units.

Modern alternatives can be found by entering the first four characters of the type code in the search field.



Data sheet

Feature	Value
Design structure	Piston slide
Type of actuation	electrical
Sealing principle	soft
Exhaust-air function	not throttleable
Manual override	detenting
Type of reset	mechanical spring
Type of piloting	Piloted
Valve function	3/2 closed, monostable
Working pressure	2.5 ... 16 bar
C value	24.2 l/sbar
b value	0.3
Standard nominal flow rate	5,600 l/min
Duty cycle	100 %
Characteristic coil data	230 V AC: 50/60 Hz, pick-up power 5 VA, holding power 3.7 VA
Permissible voltage fluctuation	-14 % / +10 %
Operating medium	Compressed air in accordance with ISO8573-1:2010 [7:4:4] Inert gases
Note on operating and pilot medium	Lubricated operation possible (subsequently required for further operation)
Corrosion resistance classification CRC	2 - Moderate corrosion stress
Materials note	Conforms to RoHS
PWIS conformity	VDMA24364-B1/B2-L
Medium temperature	-10 ... 60 °C
Ambient temperature	-10 ... 60 °C
CE symbol (see declaration of conformity)	according to EU low voltage guideline
UKCA marking (see declaration of conformity)	To UK instructions for electrical equipment
Mounting type	Line installation with accessories
Assembly position	Any
Flow direction	non reversible
Product weight	800 g
Pneumatic connection, port 1	G1/2
Pneumatic connection, port 2	G1/2
Pneumatic connection, port 3	G3/8
Air purity class at output	Compressed air in accordance with ISO8573-1:2010 [7:4:4] Inert gases
Electrical connection	Plug pattern type C to EN 175301-803 Plug Per DIN EN 175301-803
Material seals	NBR
Material housing	Aluminum die cast